

FORGE | Embroidery Machine

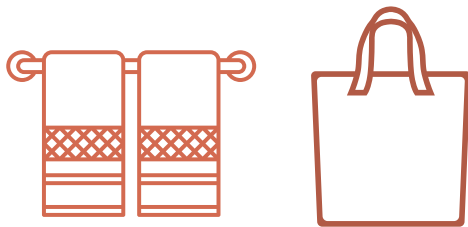
Embroidery Machine Materials for purchase during a 1-1 Appointment

- Per 1000 stitches - \$0.25

Stabilizer Guide

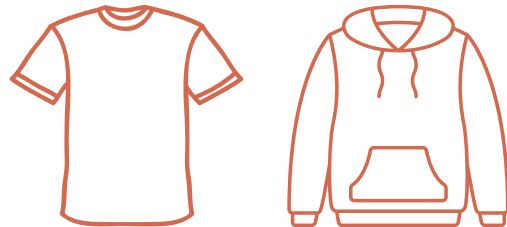
Use this guide to help you choose the correct stabilizer for your project.
Please note that stabilizer is not available at the library.

TEAR AWAY STABILIZER



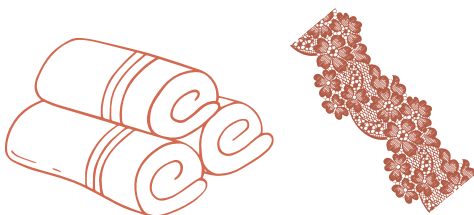
**Woven items or flat items use
TEAR AWAY STABILIZER**

CUT AWAY STABILIZER



**All stretch clothing items need
CUT AWAY STABILIZER**

WATER SOLUBLE STABILIZER



**Fuzzy and high-pile items need
WATER SOLUBLE TOP
STABILIZER**

Procedures for using Ela Library's Embroidery Machine

- Embroidery Machine use is by appointment only.
- All embroidery materials may only be purchased during a One-on-One Appointment and be used the same day.
- Outside materials are allowed, but must be approved by library staff. Please bring any tags and/or receipts to make the approval process easier.
- There is a limit of 5 items per person per week. (Mix and Match allowed)